



Princess May New Princess May News



ISSUE 78 page 1

Reading Needs Practice

14th November 2017

TERM TIMES



School Dates

6th Sep - 21st Dec

After School Clubs

25th Sep - 8th Dec

Children in Need

Non Uniform Day £1

Friday 17th November

Road Safety Week

20th - 24th November

Book Fair 26th - 29th

November

Christmas Plays

FS- Friday 15th December

KS1- Monday 18th Dec

KS2 - Tuesday 19th Dec

Last Day of School

Thursday 21st December

(school closes at

1.45pm, No Playcentre)

Inset Day (no school)

3rd January

Children Back to

School on

Thursday

4th January

SCHOOL OFFICE

Open Monday-Friday
at 7am-4pm

Please pay for **Playcentre**
and **School Dinners** online.

www.parentpay.com

If you have lost your card
or account details, please
contact the office.

After School Clubs

The Autumn Term clubs
will close on Friday 8th
December. The new term
registration starts on
14th December. Any
outstanding fees must be
paid by 30th November.

PARENTS EVENING well attended

Thank you parents for attending the Parents evening.
It's very important to be informed about your child's
progress and how you can help them at home.

PHOTOS

Individual photos will
be taken on **Wednesday 15th**
November. Please ensure your child
is wearing their school uniform.



Children in Need Fundraising

On **Friday 17th November** come to school
wearing unusual clothing. Dress as or bring a bear,
put on a spotty garment and give £1 for a worthy cause.

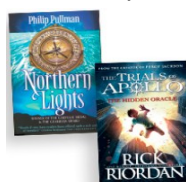
BOOK FAIR: Before and after school

Monday 26th - Thursday 29th November

The Traveling Books company will be selling books

from 26th—29th November in the bottom hall in the
morning from 8.30am – 9.00am and at 3.30pm-4pm

Come and look at the exciting titles on
offer, a wide selection of exciting reads
from non-fiction to modern classics
and the year's funniest books. Which
books do your children like?



There will be books for every age,
ability and interest, and with prices
starting from only £2.99. In addition
you will find many stationary items
such as the diaries or pencils.

Please note that for every purchase you make, our
school will receive 1/3 of value in new books!

Police Community Officer at Princess May

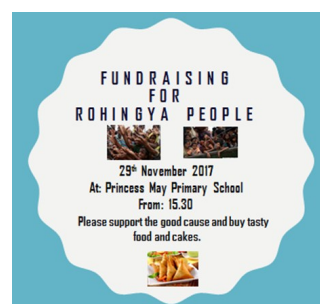
Each Friday we receive
visits from the Stoke
Newington Police 'Safer
Schools' team.



The Police Community Support Officer Nalene Jordan
talks to all year groups about the role of the Police and
how they work to make the neighbourhood safer for
communities. She also discusses the importance of
responsible behaviour and the awareness of
consequences when the law is broken.

Fundraising

On Wednesday 29th November
after school the parents group
will be raising money for the
Rohingya People. Please
support good cause and buy
delicious food.



ADULT & COMMUNITY LEARNING

ACS invites to the following
workshops funded by
Big Lottery and European
Union Social Fund for
unemployed adults

Managing Your Money

on Wednesday 15th November
at 12.30pm-3pm

&

Jewellery Making

on Saturday 25th November
at 10.30am– 12.30pm

To book, please call: 0207249
5748 or 07863 234832

ICT Level 1: Thursday &
Friday at 9.30am-11.30am

ICT Entry 3: Tuesday at
9.30am-11.30am

English Monday and
Wednesday at 9.30am-12pm

Maths:

Monday at 12.30am-3pm and
Thursday at 9.30am - 12pm

Zumba Family Learning:

Friday at 3.45pm -5.15pm

ACS Office: 02072495748

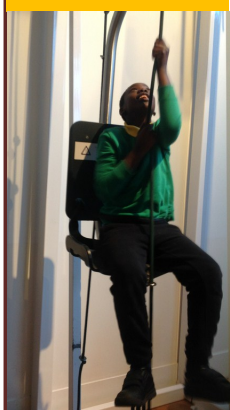
Email: office@acschool.org.uk

"On the 9th of November year 4 were lucky enough to participate in **Code London** run by the London Mayor. At the event we worked with Lego to code and create our own robots."



Year 2 in Science Museum

On 9th November Year 2 went to the Science Museum as part of their Materials topic. As well as experiencing the materials properties, they visited other exciting galleries. Can you tell what else they explored?



Can you recognise the familiar faces on these unusual photos from the Wonderlab? Do you know how they were taken?

Ridley Road in Illustration



On 9th November Year 5 started a special project by visiting a House of Illustration. They went to explore the world of illustration and particularly to see the drawings of the famous illustrator Lucinda Rogers. In her exhibition she portrayed the daily life of Ridley Road Market in Dalston. The children asked the artist how long it took to draw the scene and what techniques she used. They will practice observational drawing in the classroom and the Ridley Road Market in a series of workshops run by the professional illustrator Sion Ap Tomas.

PLAY CENTRE IS OPEN DAILY at 3.30 - 5.45 pm.
Cost £7 a day (concession £5)

BREAKFAST CLUB IS OPEN DAILY at 7.45 - 8.45 am.
Cost £1.50 a day (No entry after 8.30am)

School website www.princessmay.hackney.sch.uk