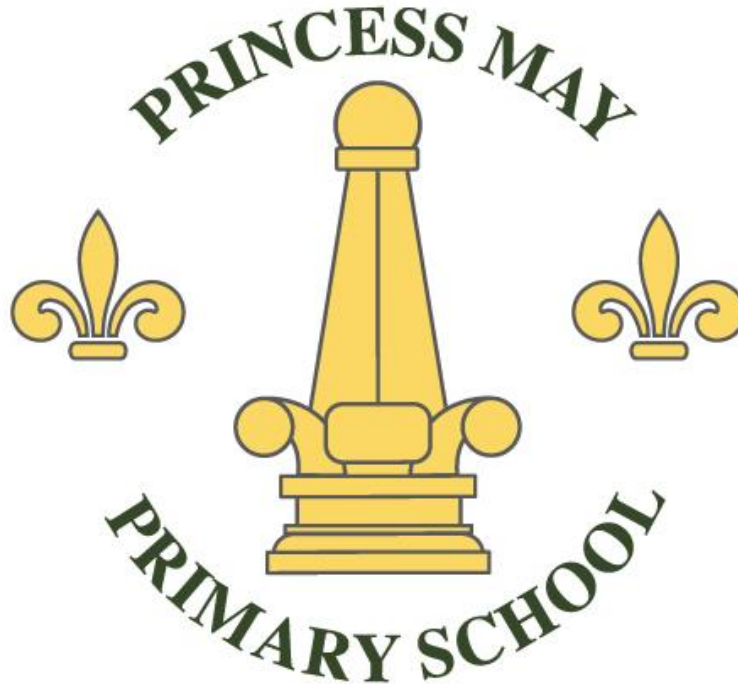


# Welcome to Princess May PTFA

Parent Teacher & Friends Association (PTFA) – Steering Group Meeting



**Parentkind**  
Member Association





# Welcome to your PTFA

All parents and carers at Princess May Primary school are automatically a member now that your child has enrolled in the school. It's your association.

## What is the PTFA?

The *Parent Teacher & Friends Association (PTFA)* is an open community of parent volunteers working alongside the school/teachers/and other "friends" to benefit the school and ensure the best educational experience for all its pupils.

If we decide that we would like our group to include the wider community – grandparents, aunts, uncles and anyone that is not a parent or staff member but would like to actively support us – then we will need to ensure that we are called a PTFA (Parents, Teachers and Friends Association). If it is just our parents and staff, then it will be called a PTA.

The PTFA is a small charity that is independent from the school.



**Parentkind**  
Member Association

“


*Parental engagement is a powerful lever for raising achievement in schools. When parents and teachers work together to improve learning, the gains in achievement are significant.*

Do Parents Know they Matter (Harris & Goodall/University of Warwick 2007)



ParentKind's 2022 report showed that 85% of parents want to play an active role in their child's education. This figure has remained high across all past research and suggests parents' interest in meaningful participation with their child's schooling is near universal.

**The top barrier to parents getting more involved in school life remains time (36%), followed by simply not being asked (28%) and being unsure what they have to offer (25%).**



**85%**

of parents want to play an active role in their child's education



**72%**

of parents want a say in their child's education at school level



**57%**

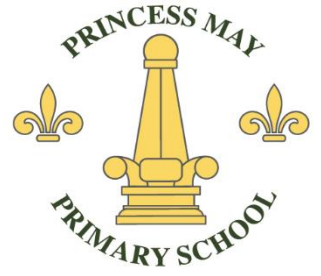
of parents feel listened to at school level



# How does the **PTFA** benefit the school?

Parents and care givers have a big impact on how well their children do at school. Taking an active role in your PTFA is one of the ways you can make a difference and get involved:

- We raise money to fund school initiatives through charity activities and events
- We provide a social support network for parents
- We provide a forum for parents to have a say
- We provide volunteers and opportunities so that parents can support their child's learning.



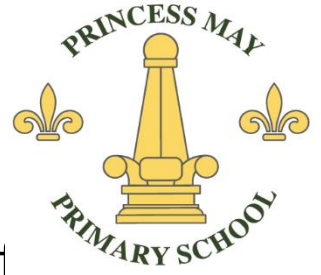
# What difference does a PTFA Make?

PTFA members in England, Wales and Northern Ireland contribute up to £121 million to the education of our children and young people. That's right - £121million each year!

The average PTA can raise up to £9,006 a year to pay for things that school budgets cannot stretch to.

**What could your school do with £9,006?**

# What do the PTFA do and why?



During a typical year we will organise a Summer and Winter fair and several smaller events to a variety of activities and initiatives for the pupils of our school. Examples of the smaller events include cake sales, religious celebrations and Quiz nights (parents only!).

The PTFA will also run the school lottery which provides a fantastic way for parents to support the school whilst also being in with a chance of winning cash prizes!

We also provide a way for parents to meet, socialise and get to know each other, all key aspects that help nurture the overall school community.

The money we raise would support a wide range of initiatives that include:

- iPads for all classrooms
- A mural decorating the playground wall
- Part-funding of the school garden
- The quiet play space
- Purchase of extra playground equipment
- Artist in residence
- Initiatives to combat air pollution on the school grounds and raise environmental awareness
- New school playground!



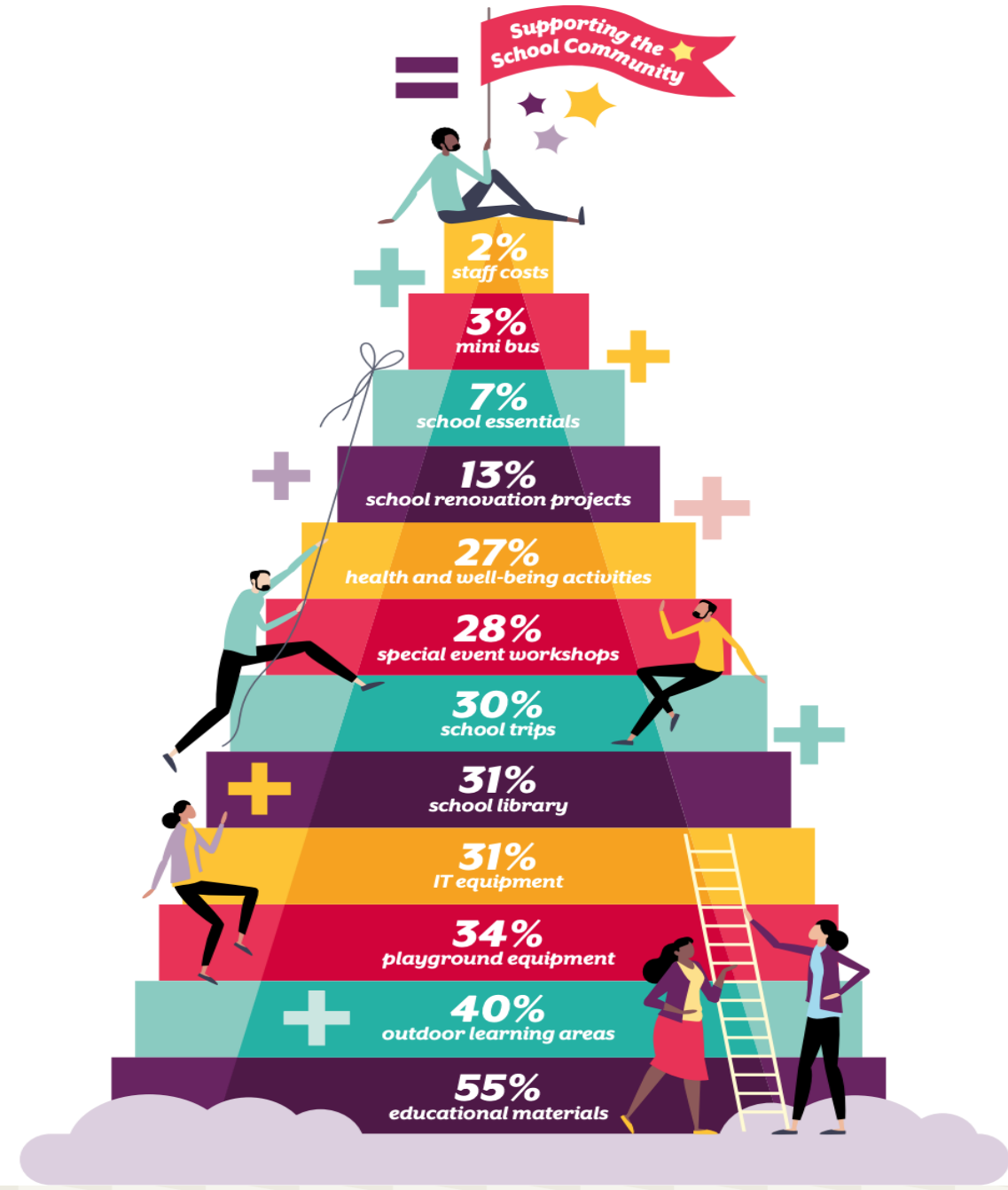
# A new EYFS outdoor area





# The benefits of a PTA

From our Annual Member Survey we know the impact PTAs can have supporting their school.





*“I love to see my mum in school helping at the fun events the PTA run for us.”*



## 1. For the kids

Being active in the PTA not only improves your child's school but makes you an excellent role model. Research confirms what we've always known: when children see us involved in their school and learning, it encourages them to do their best.



*“Through being a part of the PTA I’ve really got to know the school and have confidence in how to fit in.”*



## **2. It builds trust**

Becoming part of the PTA is a great way to get to know other parents and teachers while gaining an insight into the workings of the school. With parents and teachers striving towards the same goals, the parent group is instrumental in making a real difference in the school life of all children.



*“It’s great that we finally have some decent kit at school for a change.”*



### **3. It raises welcome funds**

Whether it’s creating an outdoor classroom, stocking the science lab with new Bunsen burners or arranging a visit from a top author, the funds raised from your activities impact massively on the opportunities and experiences of all the children at school.





*“It felt great when the head teacher asked the PTA for our views on the new school uniform policy. It made me feel listened to.”*



## **4. It gives you a voice**

Many PTAs already act as a consultative group for the school leaders and governors. So whether it's deciding on where PTA funds are spent or getting parent views on wraparound care, you can make sure parents have a voice in how your school operates.



*“We’ve been able to really grow the scale of the PTA with some great local contacts.”*



## **5. It forges connections beyond the school gates**

PTAs are brilliant for building relationships with the local community, from events, sponsorships from local businesses, and mentions in local press. Some Parentkind members have worked with local employees to run career fairs.

**Parentkind**  
Member Association





*“I’ve been able to use my design skills to help the school, it feels great to be able to make a difference.”*



## **6. It’s good for you!**

Every parent has plenty to offer a PTA, and whether it’s being on the committee, helping out at events or organising meetings, your talents will be put to good use. As well as being enjoyable and satisfying, you can build your confidence and learn new skills too.

# Some common questions







# “How can my skills be useful?”

Although a warm welcome is great, there's more to PTFA activities than home baking and serving tea:

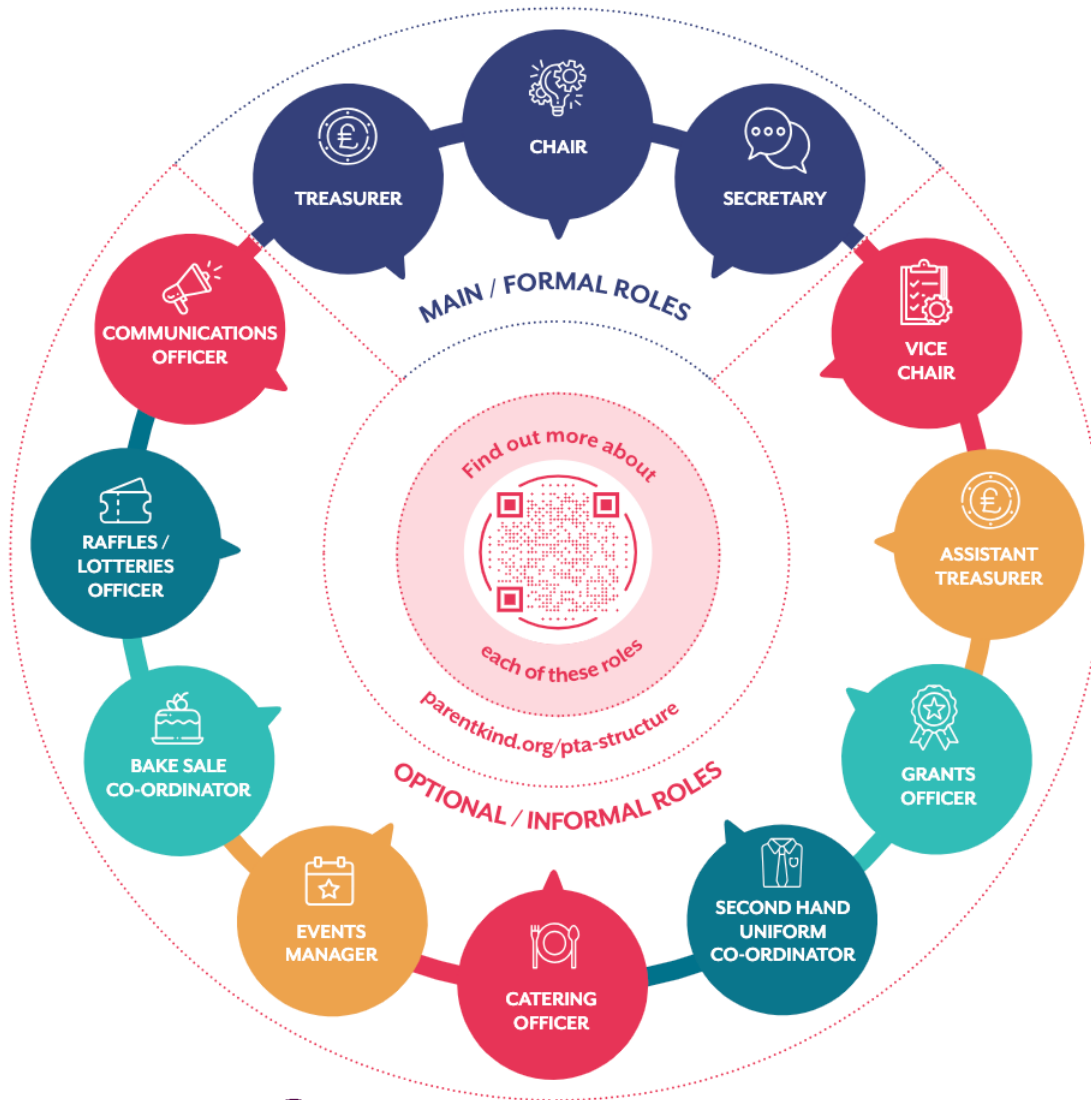
- *Any* parent can be a member, and *every* parent has skills to bring, from graphic design to gardening; from events management to balancing the books; and from wrapping up lucky dip gifts to handing out flyers!
- Could you help?
- What skills do you have that we may need?





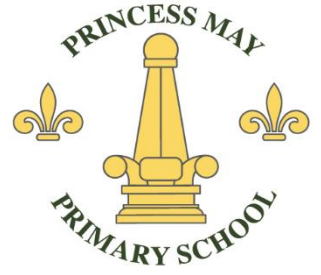
# “How much time can I commit?”

- Some of our most active mums and dads work full-time, or have other commitments
- If your child has younger siblings, the PTFA is a great way to familiarise them with their future school
- We all have lives away from school, and it's OK to say “no”
- Examples of how you can commit, either at an event or behind the scenes, include:
  - sort secondhand uniform
  - contribute to our weekly newsletter
  - promote easyfundraising/ Amazon Smile
  - help with particular events [winter fair/ summer fair / parent quiz nights]



# Committee Roles

Please take a copy of our job descriptions



# Annual General Meeting (AGM)

- The annual general meeting (AGM) for the Princess May Parents Teacher & Friends Association (PTFA) is fast approaching and we would like you to get involved.
- By attending the AGM you will get a chance to hear all about our plans for this year and vote for new committee members. By being an Officer you will get an opportunity to contribute to this good cause and also accrue valuable voluntary experience. The following positions need to be filled: **(please see the job description handbook)**.
- If you are interested in performing these duties, please take a copy of the Job description and join us for our AGM on **Thursday 12<sup>th</sup> October, 3:30-4pm** (21 days from today). These roles will give you a chance to work closely with school staff and children and give you the satisfaction of giving back something to this great institution.
- By being a part of the PTFA, your children automatically become a part of the Mini PTA. This gives them an opportunity to get involved in helping social causes and their fellow students.





# Doing things properly

Our PTFA is one of nearly 14,000 members of Parentkind. Being a member provides us with advice and support, ensuring:

- we run our PTA well according to good practice
- our events are properly insured, legal and safe
- Visit [parentkind.org.uk](https://parentkind.org.uk) and subscribe for all the latest updates.
- Check out the Facebook page for interesting chats and info:
- Parent page: [facebook.com/Parentkind.org.uk/](https://facebook.com/Parentkind.org.uk/)
- PTA page: [facebook.com/PTAExpertbyParentkind/](https://facebook.com/PTAExpertbyParentkind/)
- Follow us on Twitter: @Parentkind



Any questions?

**Parentkind**  
Member Association